



Product Catalog  
2023



# GenTek™

## Genuine Restorative Components

Tapered Screw-Vent®, Trabecular Metal®,  
Eztetic®, TSX™, and Tapered Abutment





# GenTek Open Connectivity

For even more flexibility.

## Genuine

GenTek Pre-Abutment Blanks are compatible with Medentika® holders (CAM update required).



## NEW

### GenTek TiBases

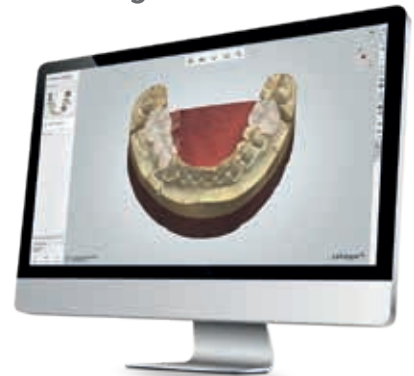
Achieve efficiency to your CAD/CAM restoration workflow with a singular TiBase that provides flexibility of channel angulation and adjustable post height options.

exocad

RealGUIDE™  
UNIVERSAL OPEN SYSTEM

dental wings

3shape



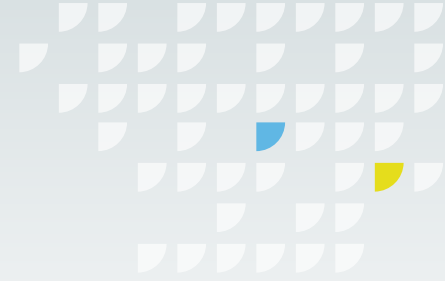
## Free

Libraries for the GenTek restorative components are available for Zfx CAD, RealGUIDE™, 3Shape, exocad, and Dental Wings CAD software.

Free download at [zfx-dental.com](http://zfx-dental.com)



SCAN & INFORM  
More at  
[www.zfx-dental.com](http://www.zfx-dental.com)







## Table of Contents

<b>NEW: GenTek TiBases</b> .....	<b>4</b>
<b>GenTek Pre-Abutment Blanks</b> .....	<b>8</b>
<b>GenTek TiBases – Milling Block Compatible</b> .....	<b>10</b>
<b>GenTek TiBases – ZimVie Multi-Unit Abutment Compatible</b> .....	<b>14</b>
<b>GenTek Scanbodies</b> .....	<b>16</b>
<b>Gentek Digital Scan Analogs</b> .....	<b>19</b>

## Legend

**∅ Restorative Platform (mm)**  
Color code for Eztetic, TSX,  
and Tapered Screw-Vent

	2.9 mmD
	3.5 mmD
	4.5 mmD
	5.7 mmD

## Placement Tool for GenTek Digital Scan Analogs Compatibility Guide

Placement Tool	Laboratory Analog
M 16	Eztetic Lab Analogss
M 18	TSV and Tapered Abutment Lab Analogs



## GenTek Calibration Tool for Milling Machines

Description	Part No.
GenTek Calibration Abutment Blank	ZFX18-CALIB



## GenTek Pre-Abutment Blank Holder

Description	Part No.
Zfx Pre-Abutment Blank Holder, Standard	ZFX02PMSH
Zfx Pre-Abutment Blank Holder, Multi-Blank for Zfx Inhouse5x	ZFX02002069
Zfx Pre-Abutment Blank Adaptor for Glass Ceramic Holder	ZFX02PMA

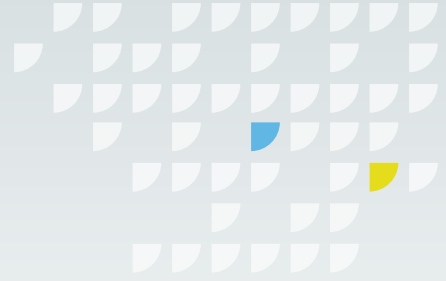


## Milling Block Compatibility Guide<sup>1</sup>

ZimVie Dental Restorative Platform Connection	Block Interface Size
Tapered Screw-Vent and Trabecular Metal	L
Eztetic	S



<sup>1</sup> Not applicable for the GenTek Angulated Screw Channel TiBase



# NEW: GenTek TiBases

## ZimVie Dental Eztetic and TSX Restorative Platform Connections

### TiBase Engaging

*incl. Hexalobular Retaining Screw and Gluing Screw*



Post Height <sup>1</sup> (mm)	Restorative Platform (mm)	Collar Height (mm)	Part No.
7	2.9	1.0	ZFX11ZB-EZ29AS10E
		1.7	ZFX11ZB-EZ29AS17E
		2.6	ZFX11ZB-EZ29AS26E

### Hexalobular Retaining Screw



Part No.	
ZFX09-ZB-EZ-HLRS	30 Ncm

### TiBase Non-Engaging

*incl. Hexalobular Retaining Screw and Gluing Screw*



Post Height <sup>1</sup> (mm)	Restorative Platform (mm)	Collar Height (mm)	Part No.
7	2.9	1.0	ZFX11ZB-EZ29AS10N
		1.7	ZFX11ZB-EZ29AS17N

### Hexalobular Retaining Screw



Part No.	
ZFX09-ZB-EZ-HLRS	30 Ncm

## ZimVie Dental TSX, Tapered Screw-Vent, & Trabecular Metal Restorative Platform Connections

### TiBase Engaging

*incl. Hexalobular Retaining Screw and Gluing Screw*



Post Height <sup>1</sup> (mm)	Restorative Platform (mm)	Collar Height (mm)	Part No.	
7	3.5	0.3	ZFX11ZB-TSV35AS03E	
		1.3	ZFX11ZB-TSV35AS13E	
		2.6	ZFX11ZB-TSV35AS26E	
	4.5	4.5	0.3	ZFX11ZB-TSV45AS03E
			1.3	ZFX11ZB-TSV45AS13E
			2.6	ZFX11ZB-TSV45AS26E
	5.7 <sup>2</sup>	5.7 <sup>2</sup>	0.3	ZFX11ZB-TSV57AS03E
			1.3	ZFX11ZB-TSV57AS13E
			2.6	ZFX11ZB-TSV57AS26E

### Hexalobular Retaining Screw



Part No.	
ZFX09-ZB-TSV-HLRS	30 Ncm

### TiBase Non-Engaging

*incl. Hexalobular Retaining Screw and Gluing Screw*



Post Height <sup>1</sup> (mm)	Restorative Platform (mm)	Collar Height (mm)	Part No.
7	3.5	0.3	ZFX11ZB-TSV35AS03N
		1.3	ZFX11ZB-TSV35AS13N
	4.5	0.3	ZFX11ZB-TSV45AS03N
		1.3	ZFX11ZB-TSV45AS13N
	5.7 <sup>2</sup>	0.3	ZFX11ZB-TSV57AS03N
		1.3	ZFX11ZB-TSV57AS13N

### Hexalobular Retaining Screw



Part No.	
ZFX09-ZB-TSV-HLRS	30 Ncm

<sup>1</sup> Various groove heights at 4.5, 5.7 mm

<sup>2</sup> Not compatible with TSX Restorative Platform

## Tools for New GenTek TiBases

One driver for compatible ZimVie Dental Connections

### Hexalobular Screwdriver for Hexalobular Retaining Screw

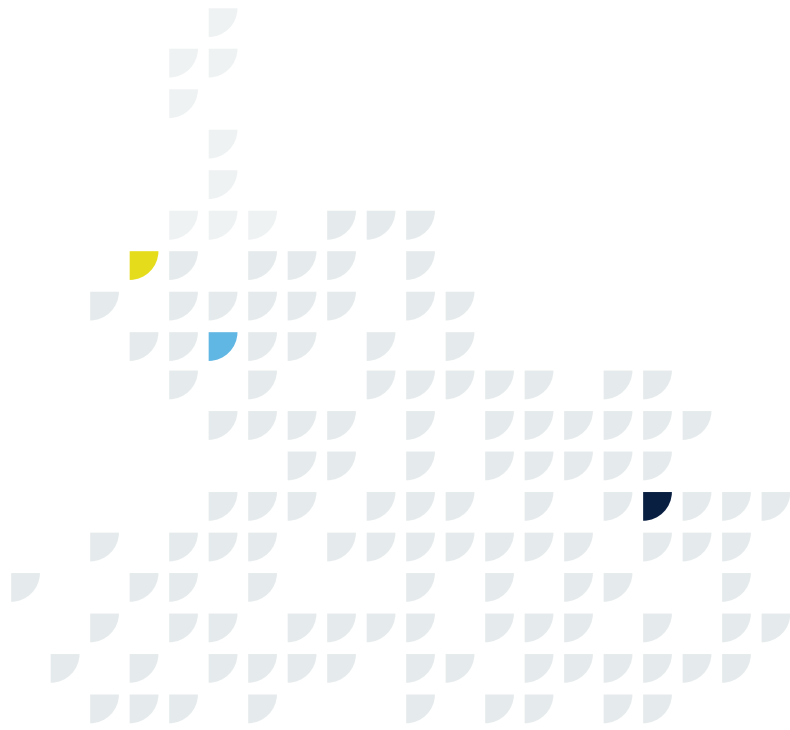


Length (mm)	Part No.
21	ZFX02HLD21
28	ZFX02HLD28
36	ZFX02HLD36

### Low Torque Indicating Ratchet Wrench



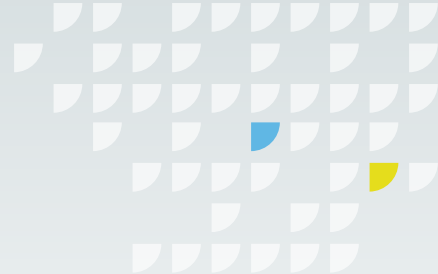
Description	Part No.
Low Torque Indicating Ratchet Wrench	L-TIRW
L-TIRW Standard ISO 1797 Adapter	C9980



**Low Torque Indicating Ratchet Wrench Kit<sup>1</sup>***incl. Adapter, Tray, and Driver Tips*

Description	Part No.
<ul style="list-style-type: none"> <li>• L-TIRW: Low Torque Indicating Ratchet Wrench</li> <li>• C9980: L-TIRW Standard ISO 1797 Adapter<sup>2</sup><sup>3</sup></li> <li>• RTI2035TR: Torque Indicating Ratchet Wrench Tray</li> <li>• RASH3N: Narrow Right Angle Large Hexed Driver Tip, 24mm</li> <li>• RASQ3N: Narrow Right Angle Square Driver Tip, 24mm</li> </ul>	L-TIRWK

<sup>1</sup>Components also sold separately<sup>2</sup>Short ISO 1797 adapter also available (C9981)<sup>3</sup>C9980 can be ordered separately



# GenTek Pre-Abutment Blanks

## ZimVie Dental Eztetic and TSX Restorative Platform Connections

### Titanium Pre-milled Abutment Blank *incl. Retaining Screw*



Restorative Platform (mm)	Part No.	Part No.	
2.9	ZFX18-ZB-EZ-29	ZFX09-ZB-EZ-RS	30 Ncm

### Retaining Screw

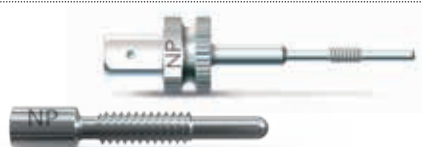


### Hex Driver, Latch-Lock Hex Driver *for Retaining Screws & Intraoral Scanbodies*



Description	Part No.
Hex Driver, Short, with GemLock® Retention 1.25 mmD, 22 mmL	HXGR1.25 <sup>1 2 3</sup>
Hex Driver, Long, with GemLock Retention 1.25 mmD, 30 mmL	HXLGR1.25 <sup>1 2 3</sup>
Latch-Lock Hex Driver for Surgical and Prosthetic Screws, Short 1.25 mmD, 23 mmL <i>(may require reduction hand piece)</i>	HX1.25D <sup>1</sup>
Latch-Lock Hex Driver for Surgical and Prosthetic Screws, Long 1.25 mmD, 26 mmL <i>(may require reduction hand piece)</i>	HXL1.25D <sup>1</sup>

### Removal Tool



Description	Part No.
Removal Tool for Abutments	CLRT2
Removal Tool for Narrow Platform for Abutments	ZFX02-RTNP

### Torque Wrench Tool

*for Abutment Screws & Intraoral Scanbodies*



Description	Part No.
Torque Wrench, Restorative (adjustable torque range 10 – 35 Ncm)	TWR
Torque Wrench Driver, Short	TW1.25 <sup>1</sup>
Torque Wrench Driver, Long	TW1.25L <sup>1 2</sup>



## ZimVie Dental TSX, Tapered Screw-Vent, & Trabecular Metal Restorative Platform Connections

### Titanium Pre-milled Abutment Blank *incl. Retaining Screw*



Restorative Platform (mm)	Part No.
3.5	ZFX18-ZB-TSV-35
4.5	ZFX18-ZB-TSV-45
5.7 <sup>5</sup>	ZFX18-ZB-TSV-57

### Retaining Screw



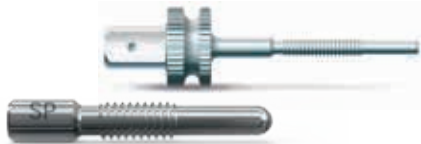
Part No.	
ZFX09-ZB-TSV-RS	30 Ncm

### Hex Driver, Latch-Lock Hex Driver *for Retaining Screws & Intraoral Scanbodies*



Description	Part No.
Hex Driver, Short, with GemLock Retention 1.25 mmD, 22 mmL	HXGR1.25 <sup>1 2 4</sup>
Hex Driver, Long, with GemLock Retention 1.25 mmD, 30 mmL	HXLGR1.25 <sup>1 2 4</sup>
Latch-Lock Hex Driver for Surgical and Prosthetic Screws, Short 1.25 mmD, 23 mmL ( <i>may require reduction hand piece</i> )	HX1.25D <sup>1</sup>
Latch-Lock Hex Driver for Surgical and Prosthetic Screws, Long 1.25 mmD, 26 mmL ( <i>may require reduction hand piece</i> )	HXL1.25D <sup>1</sup>

### Removal Tool



Description	Part No.
Removal Tool for Abutments	TLRT2
Removal Tool Standard Platform for Abutments	ZFX02-RTSP

### Torque Wrench Tool

*for Abutment Screws & Intraoral Scanbodies*



Description	Part No.
Torque Wrench, Restorative (adjustable torque range 10 – 35 Ncm)	TWR
Torque Wrench Driver, Short	TW1.25 <sup>1</sup>
Torque Wrench Driver, Long	TW1.25L <sup>1 2</sup>

<sup>1</sup> Compatible with TiBases

<sup>2</sup> Compatible with IOS Scanbodies

<sup>3</sup> Compatible with Removal Tool Narrow Platform

<sup>4</sup> Compatible with Removal Tool Standard Platform

<sup>5</sup> Not compatible with TSX Restorative Platform

# GenTek TiBases Milling Block Compatible

## ZimVie Dental Eztetic and TSX Restorative Platform Connections

### Single-Unit Restorative Components

**TiBase Engaging<sup>1</sup>**  
incl. Retaining and Gluing Screws



Height (mm)	Restorative Platform (mm)	Part No.
4.7	2.9	ZFX11-ZB-EZ-2947-ES

**Retaining Screw**



Part No.	Recommended Torque
ZFX09-ZB-EZ-RS	30 Ncm

### Multi-Unit Restorative Components

**TiBase Non-Engaging<sup>1</sup>**  
incl. Retaining and Gluing Screws



Height (mm)	Restorative Platform (mm)	Part No.
4.7	2.9	ZFX11-ZB-EZ-2947-NES

**Retaining Screw**



Part No.	Recommended Torque
ZFX09-ZB-EZ-RS	30 Ncm

**Hex Driver, Latch-Lock Hex Driver**  
for Retaining Screws



Description	Part No.
Hex Driver, Short, with GemLock Retention 1.25 mmD, 22 mmL	HXGR1.25 <sup>2 3 4</sup>
Hex Driver, Long, with GemLock Retention 1.25 mmD, 30 mmL	HXLGR1.25 <sup>2 3 4</sup>
Latch-Lock Hex Driver for Surgical and Prosthetic Screws, Short 1.25 mmD, 23 mmL (may require reduction hand piece)	HX1.25D <sup>2</sup>
Latch-Lock Hex Driver for Surgical and Prosthetic Screws, Long 1.25 mmD, 26 mmL (may require reduction hand piece)	HXL1.25D <sup>2</sup>

**Removal Tool**



Description	Part No.
Removal Tool for Abutments	CLRT2
Removal Tool for Narrow Platform for Abutments	ZFX02-RTNP

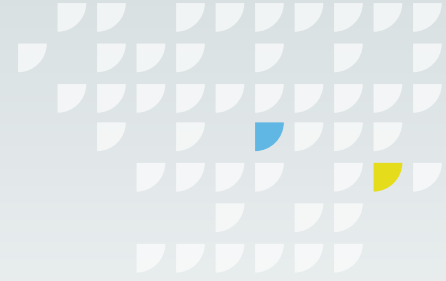
**Torque Wrench Tool**  
for Abutment Screws



Description	Part No.
Torque Wrench, Restorative (adjustable torque range 10 – 35 Ncm)	TWR
Torque Wrench Driver, Short	TW1.25 <sup>2</sup>
Torque Wrench Driver, Long	TW1.25L <sup>2 3</sup>

<sup>1</sup>4 mm groove indicating minimal allowed post height  
Not applicable for the GenTek Angulated Screw Channel TiBase  
<sup>2</sup> Compatible with TiBases

<sup>3</sup> Compatible with IOS Scanbodies  
<sup>4</sup> Compatible with Removal Tool Narrow Platform



# GenTek TiBases Milling Block Compatible

## ZimVie Dental TSX, Tapered Screw-Vent, & Trabecular Metal Restorative Platform Connections

### Single-Unit Restorative Components

**TiBase Engaging<sup>1</sup>**  
*incl. Retaining and Gluing Screws*



Height (mm)	Restorative Platform (mm)	Part No.
4.7	3.5	ZFX11-ZB-TSV-3547-EL
	4.5	ZFX11-ZB-TSV-4547-EL
	5.7 <sup>3</sup>	ZFX11-ZB-TSV-5747-EL

**Retaining Screw**



Part No.	
ZFX09-ZB-TSV-RS	30 Ncm

### Multi-Unit Restorative Components

**TiBase Non-Engaging<sup>1</sup>**  
*incl. Retaining and Gluing Screws*



Height (mm)	Restorative Platform (mm)	Part No.
4.7	3.5	ZFX11-ZB-TSV-3547-NEL
	4.5	ZFX11-ZB-TSV-4547-NEL
	5.7 <sup>3</sup>	ZFX11-ZB-TSV-5747-NEL

**Retaining Screw**



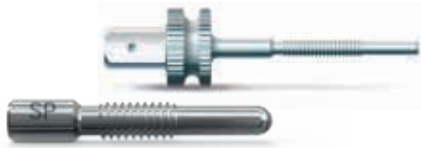
Part No.	
ZFX09-ZB-TSV-RS	30 Ncm

**Hex Driver, Latch-Lock Hex Driver**  
for Retaining Screws



Description	Part No.
Hex Driver, Short, with GemLock Retention 1.25 mmD, 22 mmL	HXGR1.25 <sup>2 3 4</sup>
Hex Driver, Long, with GemLock Retention 1.25 mmD, 30 mmL	HXLGR1.25 <sup>2 3 4</sup>
Latch-Lock Hex Driver for Surgical and Prosthetic Screws, Short 1.25 mmD, 23 mmL (may require reduction hand piece)	HX1.25D <sup>2</sup>
Latch-Lock Hex Driver for Surgical and Prosthetic Screws, Long 1.25 mmD, 26 mmL (may require reduction hand piece)	HXL1.25D <sup>2</sup>

**Removal Tool**



Description	Part No.
Removal Tool for Abutments	TLRT2
Removal Tool Standard Platform for Abutments	ZFX02-RTSP

**Torque Wrench Tool**  
for Abutment Screws



Description	Part No.
Torque Wrench, Restorative (adjustable torque range 10 – 35 Ncm)	TWR
Torque Wrench Driver, Short	TW1.25 <sup>2</sup>
Torque Wrench Driver, Long	TW1.25L <sup>2 3</sup>

<sup>1</sup>4 mm groove indicating minimal allowed post height  
<sup>2</sup>Not applicable for the GenTek Angulated Screw Channel TiBase  
<sup>3</sup>Compatible with TiBases  
<sup>4</sup>Not compatible with TSX Restorative Platform

<sup>\*</sup>Compatible with IOS Scanbodies  
<sup>†</sup>Compatible with Removal Tool Standard Platform

# GenTek TiBases ZimVie Multi-Unit Abutment Compatible

## ZimVie Dental Tapered Abutment

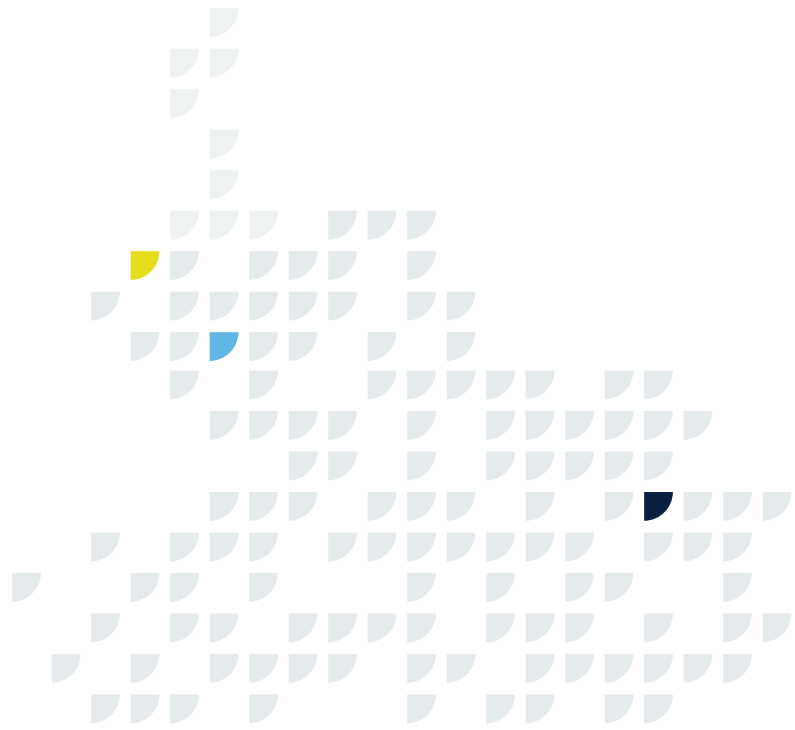
### Multi-Unit Restorative Components

**TiBase Non-Engaging<sup>1</sup>**  
*incl. Retaining and Gluing Screws*

**Retaining Screw**



Height (mm)	Restorative Platform (mm)	Part No.	Part No.	Recommended Torque
3.9	4.5	ZFX11-ZB-TA-45	ZFX09-ZB-TA-RS	20 Ncm



**Hex Driver, Latch-Lock Hex Driver**  
for Retaining Screws



Description	Part No.
Hex Driver, Short, with GemLock Retention 1.25 mmD, 22 mmL	HXGR1.25
Hex Driver, Long, with GemLock Retention 1.25 mmD, 30 mmL	HXLGR1.25
Latch-Lock Hex Driver for Surgical and Prosthetic Screws, Short 1.25 mmD, 23 mmL (may require reduction hand piece)	HX1.25D
Latch-Lock Hex Driver for Surgical and Prosthetic Screws, Long 1.25 mmD, 26 mmL (may require reduction hand piece)	HXL1.25D

**Torque Wrench Tool**  
for Abutment Screws

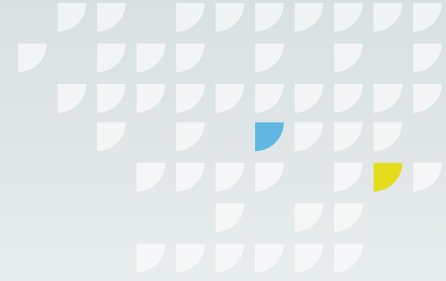


Description	Part No.
Torque Wrench, Restorative (adjustable torque range 10 – 35 Ncm)	TWR
Torque Wrench Driver, Short	TW1.25 <sup>2</sup>
Torque Wrench Driver, Long	TW1.25L <sup>2,3</sup>

<sup>1</sup> Not applicable for the GenTek Angulated Screw Channel TiBase

<sup>2</sup> Compatible with TiBases

<sup>3</sup> Compatible with IOS Scanbodies



## ZimVie Dental Eztetic and TSX Restorative Platform Connections

### Desktop Scanbody incl. Screw



↑  
Recommended  
Torque

Restorative Platform (mm)	Part No.	
2.9	ZFX05D-ZB-EZ-29	Hand-tighten <sup>1</sup>

### Torque Wrench for Desktop Scanbody



Part No.
ZFX02002067

### Intraoral Scanbodies incl. Screws



↑  
Recommended  
Torque

Height (mm)	Restorative Platform (mm)	Part No.	
4.0 & 7.0	2.9	ZFX05I-ZB-EZ-29	Hand-tighten <sup>1</sup>

### Hex Driver, Latch-Lock Hex Driver for Intraoral Scanbodies



Description	Part No.
Hex Driver, Short, with GemLock Retention 1.25 mmD, 22 mmL	HXGR1.25 <sup>2 3 4</sup>
Hex Driver, Long, with GemLock Retention 1.25 mmD, 30 mmL	HXLGR1.25 <sup>2 3 4</sup>
Latch-Lock Hex Driver for Surgical and Prosthetic Screws, Short 1.25 mmD, 23 mmL (may require reduction hand piece)	HX1.25D <sup>2</sup>
Latch-Lock Hex Driver for Surgical and Prosthetic Screws, Long 1.25 mmD, 26 mmL (may require reduction hand piece)	HXL1.25D <sup>2</sup>



## ZimVie Dental TSX, Tapered Screw-Vent, & Trabecular Metal Restorative Platform Connections

### Desktop Scanbody incl. Screw



↑  
Recommended  
Torque

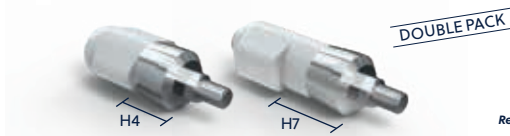
Restorative Platform (mm)	Part No.	Hand-tighten <sup>1</sup>
3.5	ZFX05D-ZB-TSV-35	
4.5	ZFX05D-ZB-TSV-45	
5.7 <sup>6</sup>	ZFX05D-ZB-TSV-57	

### Torque Wrench for Desktop Scanbody



Part No.
ZFX02002067

### Intraoral Scanbodies incl. Screws



↑  
Recommended  
Torque

Height (mm)	Restorative Platform (mm)	Part No.	Hand-tighten <sup>1</sup>
4.0 & 7.0	3.5	ZFX05I-ZB-TSV-35	
	4.5	ZFX05I-ZB-TSV-45	
	5.7 <sup>6</sup>	ZFX05I-ZB-TSV-57	

### Hex Driver, Latch-Lock Hex Driver for Intraoral Scanbodies



Description	Part No.
Hex Driver, Short, with GemLock Retention 1.25 mmD, 22 mmL	HXGR1.25 <sup>2 3 5</sup>
Hex Driver, Long, with GemLock Retention 1.25 mmD, 30 mmL	HXLGR1.25 <sup>2 3 5</sup>
Latch-Lock Hex Driver for Surgical and Prosthetic Screws, Short 1.25 mmD, 23 mmL (may require reduction hand piece)	HX1.25D <sup>2</sup>
Latch-Lock Hex Driver for Surgical and Prosthetic Screws, Long 1.25 mmD, 26 mmL (may require reduction hand piece)	HXL1.25D <sup>2</sup>

<sup>1</sup> Minimum of 5 Ncm; Maximum of 15 Ncm. Refer to Instruction Manual for more information.

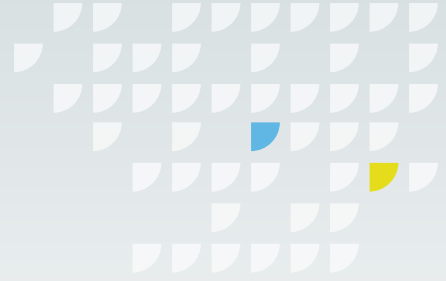
<sup>2</sup> Compatible with TiBases

<sup>3</sup> Compatible with IOS Scanbodies

<sup>4</sup> Compatible with Removal Tool Narrow Platform

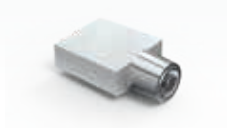
<sup>5</sup> Compatible with Removal Tool Standard Platform

<sup>6</sup> Not compatible with TSX Restorative Platform



## ZimVie Dental Tapered Abutment

### Desktop Scanbody *incl. Screw*



↑  
Recommended  
Torque

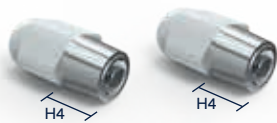
Restorative Platform (mm)	Part No.	
4.5	ZFX05D-ZB-TA-45	Hand-tighten <sup>1</sup>

### Torque Wrench *for Desktop Scanbody*



Part No.
ZFX02002067

### Intraoral Scanbodies *incl. Screws*



DOUBLE PACK

↑  
Recommended  
Torque

Height (mm)	Restorative Platform (mm)	Part No.	
4.0	4.5	ZFX05I-ZB-TA-45	Hand-tighten <sup>1</sup>

### Hex Driver, Latch-Lock Hex Driver *for Intraoral Scanbodies*



Description	Part No.
Hex Driver, Short, with GemLock Retention 1.25 mmD, 22 mmL	HXGR1.25
Hex Driver, Long, with GemLock Retention 1.25 mmD, 30 mmL	HXLGR1.25
Latch-Lock Hex Driver for Surgical and Prosthetic Screws, Short, 1.25 mmD, 23 mmL <i>(may require reduction hand piece)</i>	HX1.25D
Latch-Lock Hex Driver for Surgical and Prosthetic Screws, Long, 1.25 mmD, 26 mmL <i>(may require reduction hand piece)</i>	HXL1.25D

<sup>1</sup>Minimum of 5 Ncm; Maximum of 15 Ncm.  
Refer to Instruction Manual for more information.

# GenTek Digital Scan Analogs

## ZimVie Dental TSX, Tapered Screw-Vent, & Trabecular Metal Restorative Platform Connections

*Digital Scan Analog<sup>1</sup>*



*Placement Tool  
for Digital Scan Analogs*



Restorative Platform (mm)	Part No.
3.5	ZFX15-ZB-TSV-35
4.5	ZFX15-ZB-TSV-45
5.7	ZFX15-ZB-TSV-57 <sup>2</sup>

Part No.
ZFX02-M18

## ZimVie Dental Eztetic and TSX Restorative Platform Connections

*Digital Scan Analog<sup>1</sup>*



*Placement Tool  
for Digital Scan Analogs*



Restorative Platform (mm)	Part No.
2.9	ZFX15-ZB-EZ-29

Part No.
ZFX02-M16

## ZimVie Dental Tapered Abutment

*Digital Scan Analog<sup>1</sup>*



*Placement Tool  
for Digital Scan Analogs*



Restorative Platform (mm)	Part No.
4.5	ZFX15-ZB-TA-45

Part No.
ZFX02-M18

<sup>1</sup>Compatible with existing Certain / External Hex / Eztetic / TSV/TM / Low Profile / Tapered Abutment Impression Copings

<sup>2</sup>Not compatible with TSX Restorative Platform

To order genuine ZimVie Dental Components  
call your local representative or send an email to  
**dentalCS@ZimVie.com**

**ZimVie Dental Global Headquarters**

4555 Riverside Drive  
Palm Beach Gardens, FL 33410  
Phone: +1-561-776-6700  
Fax: +1-561-776-1272  
[www.ZimVie.com/dental](http://www.ZimVie.com/dental)



Unless otherwise indicated, as referenced herein, all trademarks and intellectual property rights are the property of ZimVie Inc. or an affiliate; and all products are manufactured by one or more of the dental subsidiaries of ZimVie Inc. (Biomet 3i, LLC, Zimmer Dental, Inc., etc.) and marketed and distributed by ZimVie Dental and its authorized marketing partners. For additional product information, please refer to the individual product labeling or instructions for use. Product clearance and availability may be limited to certain countries/regions. This material is intended for clinicians only and does not comprise medical advice or recommendations. Distribution to any other recipient is prohibited. This material may not be copied or reprinted without the express written consent of ZimVie. TiBases (Class IIb), Scanbodies (Class I), Blanks (Class IIb), Tools (Class I), Screws (Class IIb) and Analogs (non medical devices). ZV2015 REV B 05/23 ©2023 ZimVie. All rights reserved.

