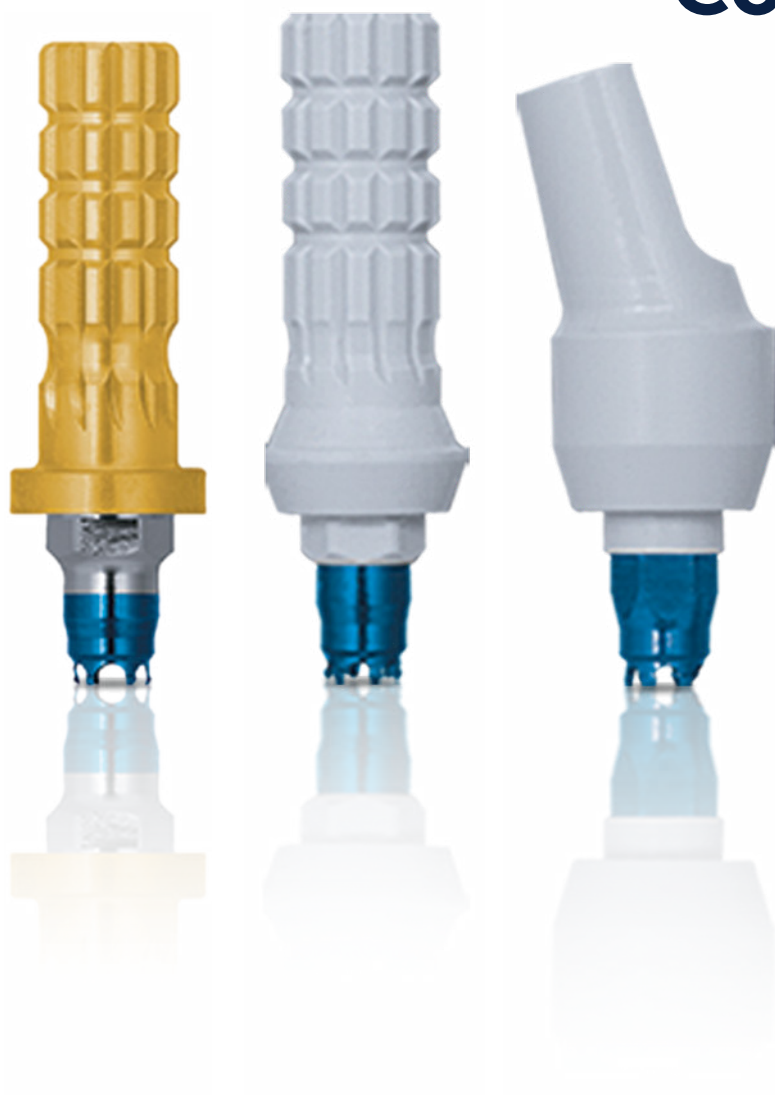


Certain® and
External Hex Implants

Provisional Components



 **ZimVie**

Provisional Components Advantages

Versatile Solutions for Patients Who Demand More Choices and Faster Results

Ease of Use and Versatility

- Components can be immediately customized to a patient's anatomical profile
- Components are made of polymer material for easy preparation

Prosthetic Flexibility

- Available for implant and abutment-level provisional restorations
- Available in internal and external hex connections

PreFormance® Post

- For use with cement-retained restorations
- Available in straight or 15° pre-angled for easy angle correction
- Smooth surface for easy provisional reline
- Flat side for anti-rotation

Temporary Cylinders

- Indicated for screw-retained restorations
- Knurled surface for mechanical retention of resin restorative material
- Available in hexed and non-hexed for single or multiple-unit restorations

QuickBridge® Titanium Cylinder and Peek Cap

- Provide a simple solution for the fabrication of multiple-unit, provisional restorations on definitive Low Profile Abutments
- All components are compatible with straight and angled Low Profile Abutments
- Ability to provisionalize chairside



Provisional Components' Case Studies

PreFormance Provisional Case Study

By: Dr. Harold Baumgartent, Philadelphia, Pennsylvania

If you seek aesthetic implant level provisional restorations, PreFormance Provisional Components may be customized chairside or at the laboratory for specific contours and anatomic profiles.



Fig. 1. NanoTite® Certain Implant in place. The bone was profiled around the interface.



Fig. 2. A PreFormance Post was seated into the implant.



Fig. 3. The PreFormance Post was prepared intraorally to follow the gingival contours.



Fig. 4. The prefabricated crown shell was luted to the PreFormance Post.



Fig. 5. The provisional restoration was fabricated, occlusal and interproximal contacts were checked, adjusted accordingly, and delivered to the patient.

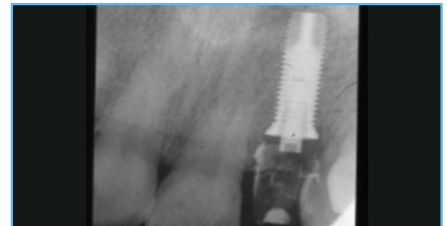


Fig. 6. A periapical radiograph was taken of the provisional restoration.

QuickBridge Provisional Case Study

By: Dr. Pär-Olov Östman†, Falun, Sweden

Clinicians who prefer screw-retained definitive restorations but want the simplicity and cost effectiveness of cement-retained immediate or delayed provisional bridges, may find QuickBridge Provisional Components an ideal choice.



Fig. 1. Conical-shaped screw-retained abutments were placed with 20 Ncm.



Fig. 2. QuickBridge Titanium Cylinders were placed.



Fig. 3. QuickBridge PEEK Caps were snapped onto the Titanium Cylinders.



Fig. 4. A provisional restoration was fabricated chairside with a translucent template and Protemp™ 4 Garant™ (3M ESPE).

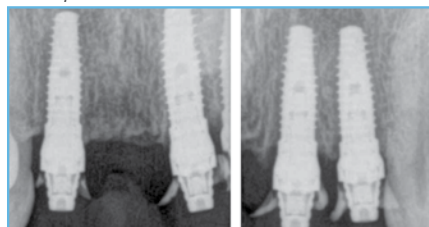


Fig. 5. Postoperative radiographs. Three 15 mmL NanoTite Tapered Implants were placed in the extraction sockets.



Fig. 6. A CAD/CAM definitive prosthesis was fabricated and placed.

† These clinicians have a financial relationship with ZimVie Dental resulting from speaking engagements, consulting engagements, and other retained services.

Ordering Information



PreFormance Posts	Certain Internal Connection	
	Straight	Pre-Angled (15°)
3.4 mmD Seating Surface		
3.8 mmP x 4.0 mmH	IMPFP34	IMPAPF34
3.8 mmP x 6.0 mmH	IMPFP36	IMPAPF36
5.0 mmP x 4.0 mmH	IMPFP354	IMPAPF354
5.0 mmP x 6.0 mmH	IMPFP356	IMPAPF356
4.1 mmD Seating Surface		
5.0 mmP x 4.0 mmH	IPFP454	IPAPF454
5.0 mmP x 6.0 mmH	IPFP456	IPAPF456
5.0 mmD Seating Surface		
5.0 mmP x 4.0 mmH	IWFPF554	IPAPF554
5.0 mmP x 6.0 mmH	IWFPF556*	IPAPF556*
6.0 mmD Seating Surface		
6.0 mmP x 4.0 mmH	IWFPF664*	IPAPF664*
6.0 mmP x 6.0 mmH	IWFPF666*	IPAPF666*

* Not available in all markets



Temporary Cylinders	Titanium		PreFormance	
	Certain Internal Connection	External Hex Connection	Certain Internal Connection	External Hex Connection
3.4 mm Seating Surface				
Hexed	IMMTCS1	MMTCS1	IMPFTC34	MPFTC34
Non-Hexed	—	—	IMPFTC32	MPFTC32
4.1 mm Seating Surface				
Hexed	IITCS41	ITCS41	IPFTC41	PFTC41
Non-Hexed	IITCS42	ITCS42	IPFTC42	PFTC42
5.0 mm Seating Surface				
Hexed	IWTCS51	WTCS51	IWPFTC51	WPFTC51
Non-Hexed	IWTCS52	WTCS52	IWPFTC52	WPFTC52
6.0 mm Seating Surface				
Hexed	IWTCS61	WTCS61	IWPFTC61	WPFTC61
Non-Hexed	IWTCS62	WTCS62	IWPFTC62	WPFTC62

For more information, visit ZimVie.com

ZimVie
4555 Riverside Drive
Palm Beach Gardens, FL 33410
1-800-342-5454
Phone: +1-561-776-6700
Fax: +1-561-776-1272



Unless otherwise indicated, as referenced herein, all trademarks and intellectual property rights are the property of ZimVie Inc. or an affiliate; and all products are manufactured by one or more of the dental subsidiaries of ZimVie Inc. (Biomet 3i, LLC, Zimmer Dental, Inc., etc.) and marketed and distributed by ZimVie Dental and its authorized marketing partners. ProTemp™ and Garant™ are trademarks of 3M Deutschland GmbH. For additional product information, please refer to the individual product labeling or instructions for use. Product clearance and availability may be limited to certain countries/regions. This material is intended for clinicians only and does not comprise medical advice or recommendations. Distribution to any other recipient is prohibited. This material may not be copied or reprinted without the express written consent of ZimVie. ZV1657 REV B 04/25 ©2025 ZimVie. All rights reserved.

