



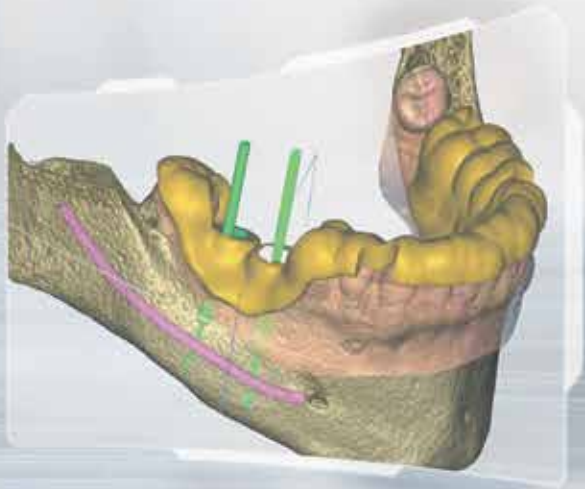
Intelligent, efficient,  
cloud based



VERSION  
**6.0**  
NEW  
FEATURES!

# RealGUIDE® Software Suite

Guided implant surgery  
and restorative design



 **ZimVie**



# Introducing RealGUIDE 6.0

## Redefining Digital Dental Design

Everything needed for precise implant planning, surgical guides, and restorative design to elevate patient care.

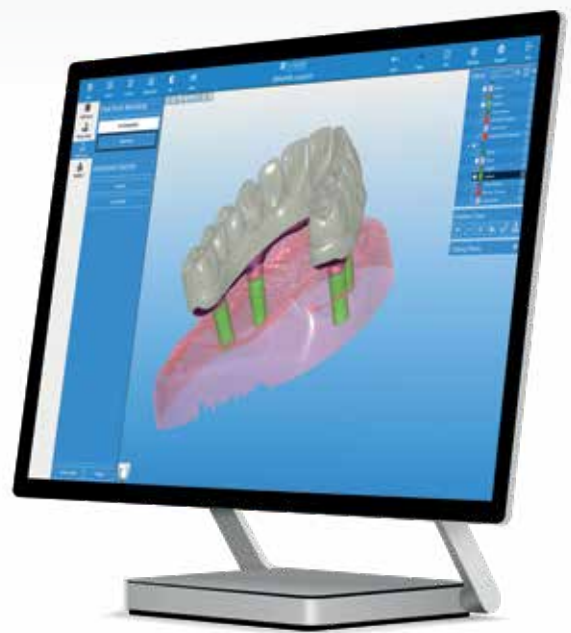
RealGUIDE 6.0 sets a new standard for flexibility and convenience. Featuring advanced AI capabilities, an innovative web application, and next-generation workflows, it makes design simpler.

## Features

- Time and cost saving AI tools
- New Web-based platform accessible anywhere
- Cloud-based License eliminates dongles
- Vast Implant Library with automatic updates
- Interconnected modules and automation ensure seamless workflows and efficiency
- Built-in communication and file sharing platform fostering collaboration
- Open architecture for maximum flexibility
- Comprehensive E-Learning access with a paid subscription
- Mac, PC or Web compatible

# Improve efficiency and productivity

RealGUIDE 6.0 offers unparalleled efficiency and accessibility. It couples innovative AI with a cutting-edge Web application for a seamless and effortless design experience.



## Time Savings with RealGUIDE Software

	Conventional Software Suite	RealGUIDE Software Suite
<b>NEW:</b> AI Teeth Placement	10 minutes	Less than 1 minute
<b>NEW:</b> AI Guide Creation	10 minutes	Less than 1 minute
<b>NEW:</b> AI Implant Placement	10 minutes	Less than 1 minute
Nerve Detection	5 minutes	Less than 1 minute
Full-arch Bone Segmentation	1.5 hours	2 minutes
Full-arch Crown Segmentation	5 minutes	10 seconds
Full-arch Tooth Segmentation	5 minutes	Less than 2 minutes
Single-unit Treatment Plan + Surgical Guide Design	20 minutes	Less than 10 minutes
Full-arch Treatment Plan + Surgical Guide Design	45 minutes	Less than 15 minutes
Stackable Guide Design	2 hours	Less than 45 minutes



## Save valuable time with Artificial Intelligence (AI) tools.

### One-Click AI Nerve Detection

Automatically trace nerves in the mandible with a click of a button and save time evaluating CBCT to trace nerves.

### Assisted Segmentation Tools

Handle complex segmentation and extraction cases in a fraction of time and cost using automatic bone and teeth segmentation.

### **NEW** AI-Driven Guide Curve Generation

Save valuable design time with automated guide curve generation and eliminate labor from manually drawing the curve.

### **NEW** Automatic Teeth Placement

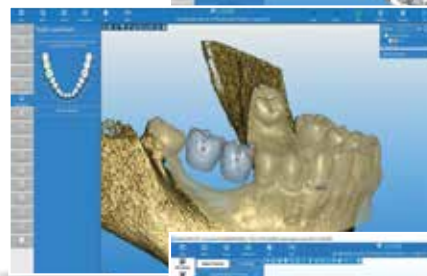
Automatic teeth placement with crown visualization improves restorative design accuracy and reduces time aligning teeth.

### **NEW** Automatic Implant Positioning

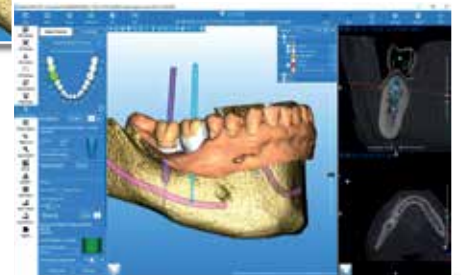
Intelligent implant positioning considers aesthetics of final prosthesis ensuring successful surgical and prosthetic outcomes.



AI-driven guide curve generation



Automatic Teeth Placement



Automatic Implant Positioning

## Improve productivity with cloud and web-based solutions.

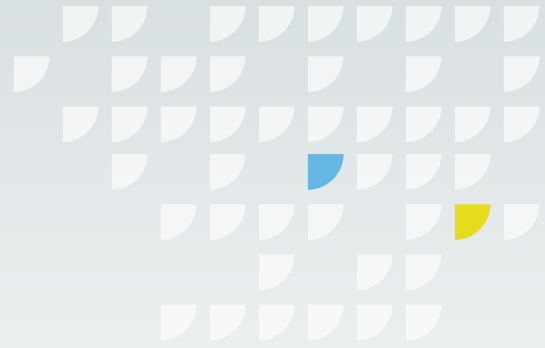
### **NEW** RealGUIDE Web Platform

Seamlessly design surgical cases from any device or system – no downloads required. Simply log into the convenient RealGUIDE web-platform.

### Cloud Prosthetic Libraries

Get access to prosthetic libraries in the cloud, and eliminate the need to manually download and install libraries.





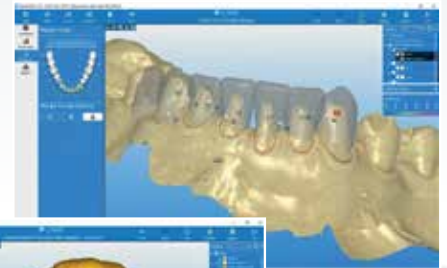
## Improve efficiency with streamlined design.

RealGUIDE Software offers maximum flexibility with an intuitive combination of powerful tools, making design both efficient and effective.

- Simplified emergence profile design
- Reference index for guide sleeves
- New teeth display shortcuts
- Gingival line adjustment tool
- Auto-connector tool
- Margin-line duplication tool
- User-defined customizable 3D views
- Flexible waxup and antagonist replacement and more!

### **NEW** Simple E-Learning Platform

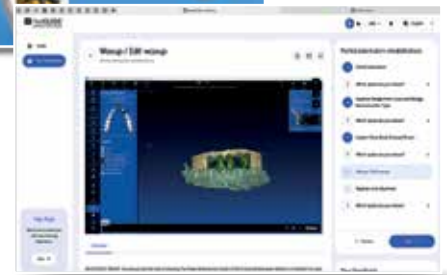
- Learn from anywhere with a web-based platform
- Comprehensive learning platform on 300+ workflows covering all digital design possibilities



Margin-line duplication tool



Reference index for guide sleeves



E-Learning Platform

## Unlock design possibilities.



### Split Bar Workflow

Create beautiful hybrid full-arch restorations from a single waxup.

### Copy Denture Workflow

Create a new denture by segmenting teeth and gingival base from a scanned denture.

### **NEW** Pre-Prosthetic Planning

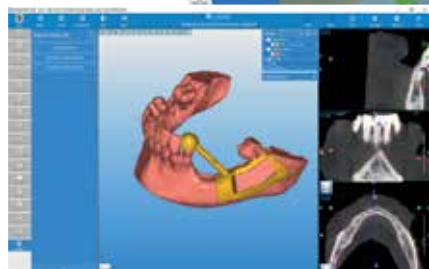
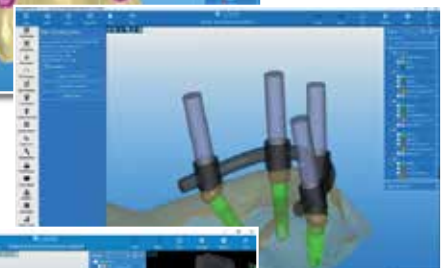
Plan and design a case from a single scan to the definitive prosthesis.

### **NEW** SafeCut™ Plugin

Plugin to create surgical guides for precise bone-harvesting.



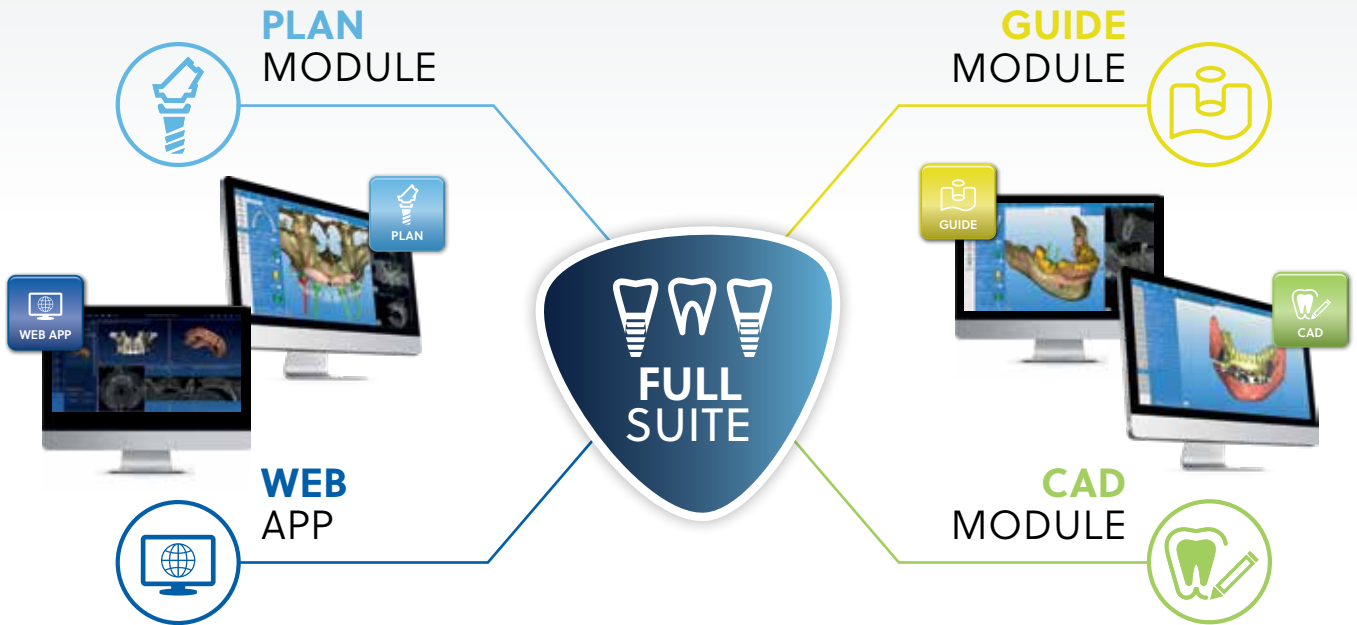
Split Bar Workflow



Pre-Prosthetic Planning

SafeCut™ Plugin

# One Software. Many Possibilities.



For information about  
modules and pricing visit  
[RealGUIDE.com](https://RealGUIDE.com)

For more information, visit [ZimVie.com](https://ZimVie.com)

## ZimVie US Corp LLC

4555 Riverside Drive  
Palm Beach Gardens, FL 33410  
Tel: +1-561-776-6700  
Fax: +1-561-776-1272  
[dentalCS@ZimVie.com](mailto:dentalCS@ZimVie.com)



Unless otherwise indicated, as referenced herein, all trademarks and intellectual property rights are the property of ZimVie Inc. and its affiliates; and all products are manufactured by one or more of the dental subsidiaries of ZimVie US Corp LLC (Biomet 3i, LLC, etc.) and distributed by ZimVie US Corp LLC and its authorized marketing partners. The SafeCut protocol is a registered product of Your Dental Future (YDF) academy & Digital services. For additional product information, please refer to the individual product labeling or instructions for use. EU Medical Device Classification: RealGUIDE Software (Ila). The intended purpose of RealGUIDE Software is to be used in the dental field by trained professionals to support diagnosis, to plan virtual implants and surgeries on 2D/3D reconstructions, to design surgical guides and prosthetic modelling, and manage the endodontic, orthodontic and orthognathic treatments connected to the oral and maxilla-facial rehabilitations. The products shown in this material are not eligible for reimbursement in France. For other countries, please check the local laws and regulations. For additional product information, please refer to the individual product labeling or instructions for use. Product clearance and availability may be limited to certain countries/regions. This material is intended for clinicians only and does not comprise medical advice or recommendations. Distribution to any other recipient is prohibited. This material may not be copied or reprinted without the express written consent of ZimVie. ZV3027-GLBL REV B 11/25 ©2025 ZimVie. All rights reserved.



0051

